



2004 Taillight Conversion Install Directions

These instructions cover the basic installation of the taillights. Some minor trimming maybe needed for final fitment of the lights. We have tried our best to make this conversion as simple and straight forward as possible. Please read this entire article before attempting this conversion, if you feel it is beyond your abilities please stop and consult with us or a professional body shop.

Before you begin there is one question that will need to be asked and that is do you want the ability to go back to your original lights if needed. If the answer is NO then some of the steps can be disregarded, if the answer is YES then follow the steps we have provided which will allow you to revert back to the original lights.

Step 1: Disassembly

Remove the LH/RH trunk liner, Unplug the Light connectors, Unbolt and remove the Lights.

At this point the lights should be removed and should look like the picture below Fig. 1

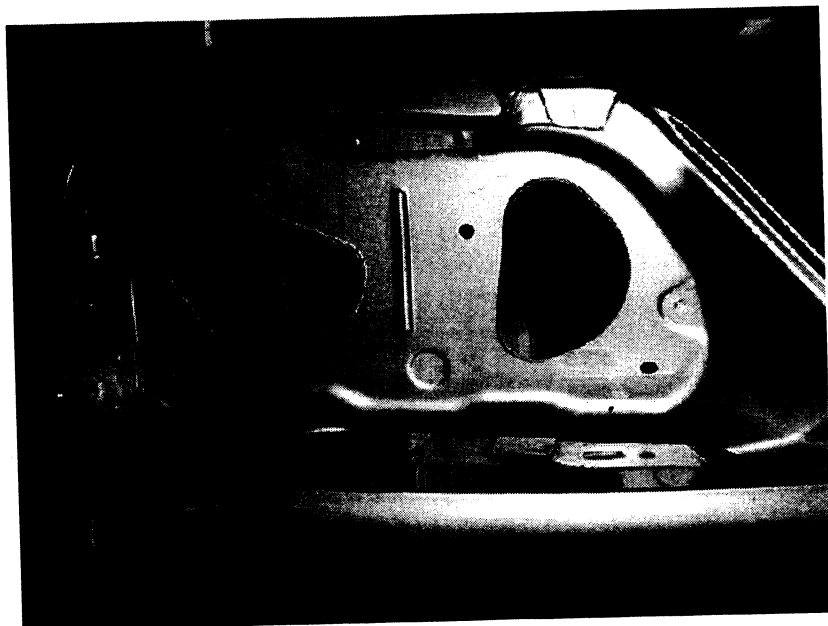


Figure 1

Step 2: Template and Cutting

Take the template provided and position using the alignment holes for a guide. The template can be temporarily bolted into place Fig.2. At this point you should have an idea of what need to be removed to allow for the 04 lights to fit. Trace the template and remove. Fig.3

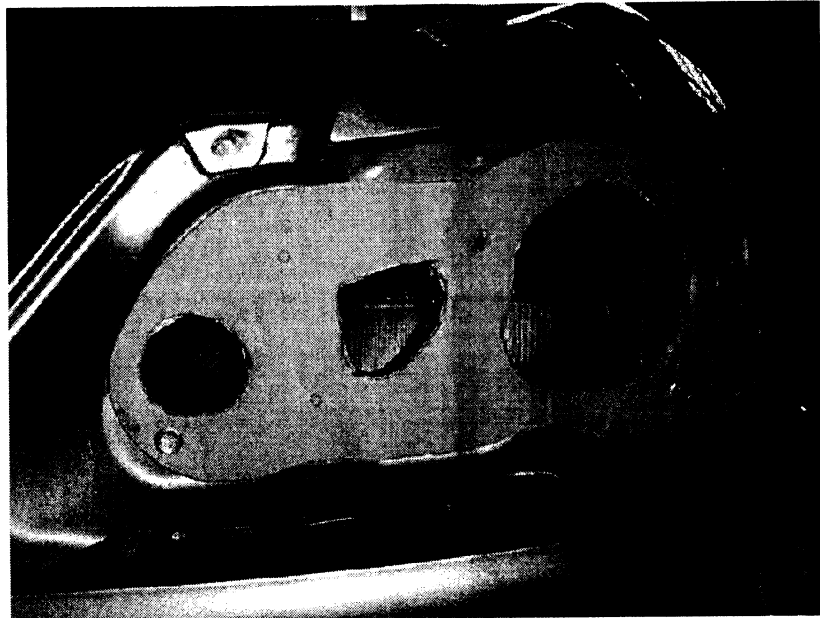


Figure 2

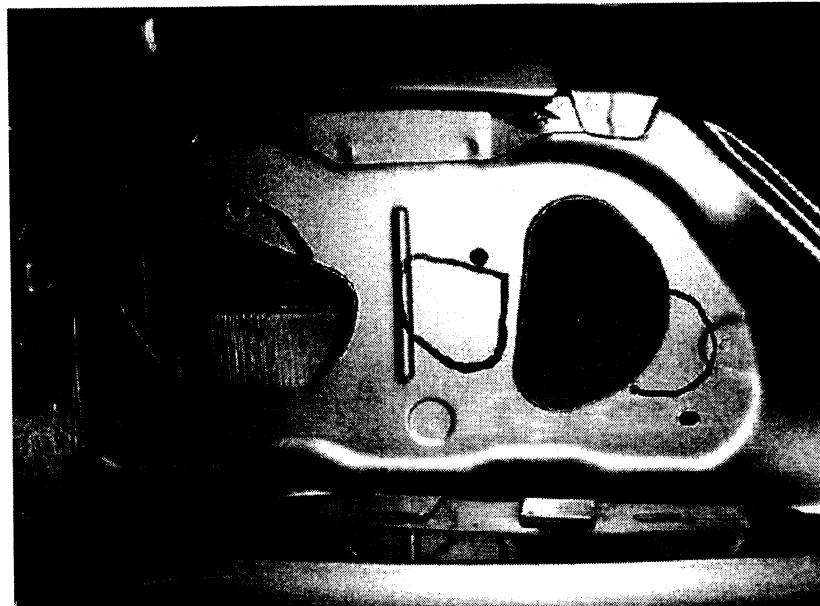


Figure 3

Once you have completed the initial cut some trimming will be needed. The template is a guide so you have an idea of where to begin. Once you have fitted the lights the rear panel should look like Fig.4 The cut edges should be filed and cleaned then painted to ensure rust protection.

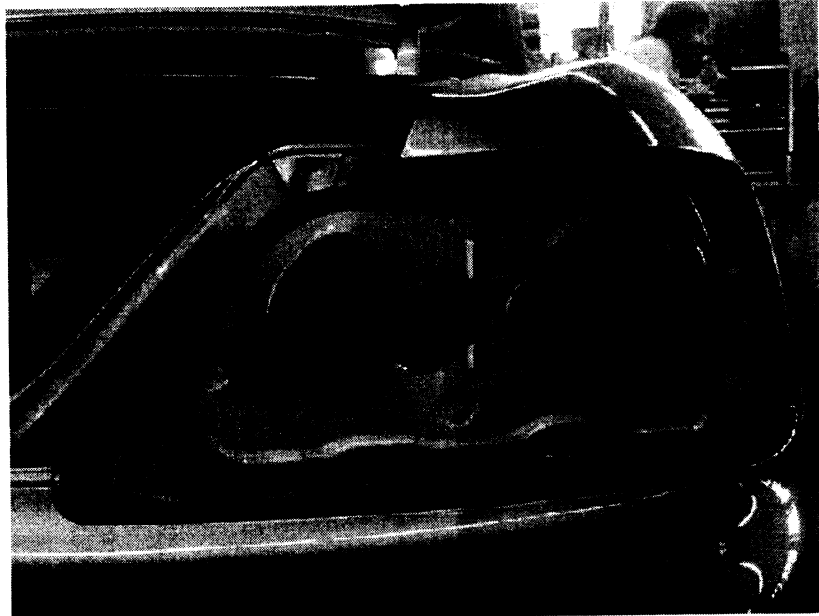


Figure 4

Step 2: Wiring

The connectors provided to secure a proper connection. The reverse light is a direct instal using the existing socket and bulb and wire. The turn signal requires the new socket and 2 blade connector provided, the bulb used for this socket is the brake light bulb from the existing light Fig.5. The brake light requires the removal of the socket and 3 blade connector and replaced with the connector provided. Fig.6

Note:
The blades for the connectors are not going to lock into the connector. A little force may be needed to completely seat the blade in the connector.

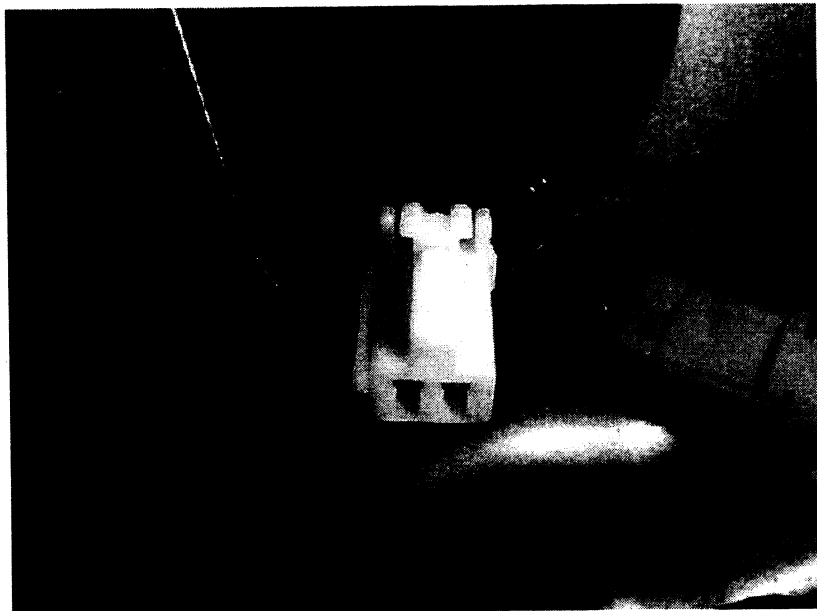
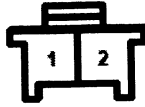


Figure 5



Left Rear:

- 1 BLK (G602)
- 2 GRN/RED
(Turn signal control (+))

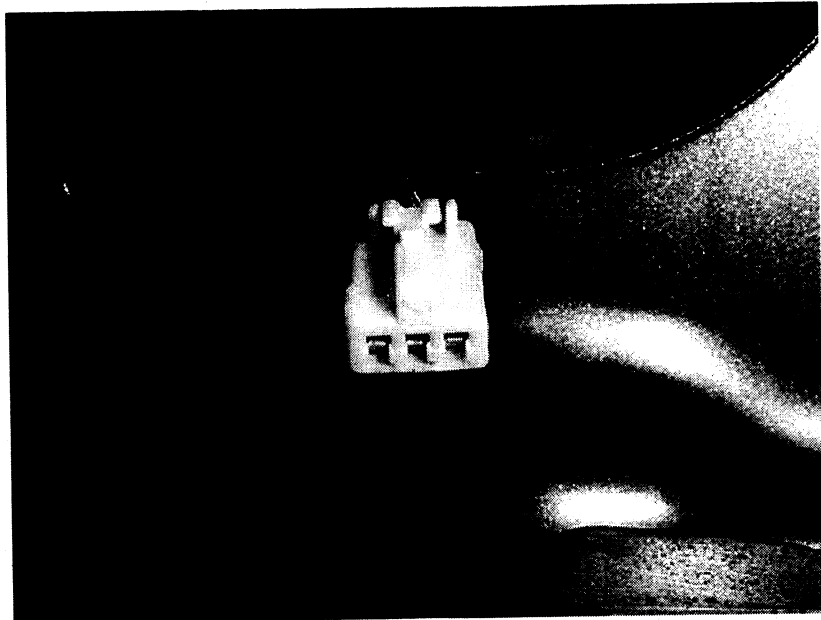
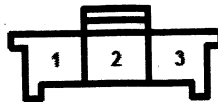


Figure 6



Left:

- 1 Male – GRN
Female – WHT/BLK
(Circuit 13 – Brake light control)
- 2 Male – RED
Female – RED/BLK
(Circuit 11 – Taillight control)
- 3 BLK (G602)

Right:

- 1 Male – GRN
Female – WHT/BLK
(Circuit 13 – Brake light control)
- 2 Male – RED
Female – RED/BLK
(Circuit 11 – Taillight control)
- 3 BLK (G602)

Step 3: Assembly

Now that the cutting and wiring is completed the final step is to instal the Lights. Place the gasket on the Light, connect the newly installed connectors and bolt the Light in place using the 2 mounting studs. Once the light is installed using the 2 mounting holes place the bracket provided on to the remaining 2 studs and tighten. Check the function of the Lights.

I hope you have enjoyed this mod you have just completed. Any questions or comments on this installation can be sent to joe@hardtopguy.com